

C.A.T Accessories

A range of accessories for Radiodetection's Cable Avoidance Tool system

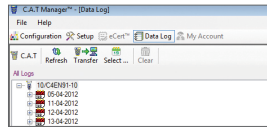
Compatible with C.A.T4™/C.A.T3™/C.A.T2™ and Genny4™/Genny3™/Genny2™ systems unless otherwise stated

C.A.T Accessories

C.A.T Manager

This Windows® PC software package allows C.A.T4 users to upgrade software, upload data logs (eC.A.T4 and gC.A.T4), retrieve calibration certificates and carry out eCert using a USB link to a PC. C.A.T Manager can disable or enable C.A.T4 features such as depth estimation and warnings. User-editable fields enable plant/fleet codes and other details to be stored on eC.A.T4 units, simplifying records and traceability. C.A.T Manager is available as a free download from the Radiodetection website or alternatively can be purchased on a CD.

Part No: 97/CATMANAGER



eCert™

eCert is part of C.A.T Manager software application and allows users to confirm and extend the calibration of a C.A.T4 remotely using a USB link to a PC running C.A.T Manager. A successful eCert will generate a certificate of calibration which may be viewed or printed.

Part No: 10/ECERT



Genny Accessories

Genny Clamp

This clamp is used to apply a Genny signal to a specific cable or pipe. This is particularly useful where direct connection is not possible, or on live cables when these cannot be de-energized. Available in 2' (50mm), 4' (100mm), 5' (130mm) and 8.5' (215mm) diameters.

Part No: 10/GENNY-CLAMP-XX (XX= 2, 50, 4, 100, 5, 130, 8.5, 215)



Extension Rod

The 25" (630mm) length, non-conductive, nylon extension rod is used to extend the reach of the Genny clamp. Multiple rods can be connected together to extend the reach further.

Part No: 10/TX-CLAMP-EXTROD



Earth Extension Lead

This 33' (10m) lead, wound on a convenient spool, is used to extend the direct connection lead earth return connector, when a local earth point cannot be reached or is not suitable.

Part No: 10/TX-EARTHLEAD



Earth Stake

This metal stake is inserted into the ground to provide an earth return path for the Genny signal.

Part No: 10/GENNY-EARTHSTAKE



Neodymium Magnet

This high strength magnet can be attached to metallic pipes, street furniture, etc., to provide a convenient connection point for the direct connect lead signal connector.

Part No: 10/TX-MAGNET



Direct Connection Lead

This is used for applying a Genny signal directly on to utilities.

Part No: 10/GENNY-DC-LEAD



Genny Connection Kit

This kit includes the most common Genny connection accessories: direct connection lead, earth extension lead, earth stake and high-strength neodymium magnet.

Part No: 10/GENNY-KIT



Live Plug Connector (LPC)

This accessory is used to easily apply a Genny signal to a street distribution cable using a standard mains socket. It is available with either a UK or EU style mains plug or a ROW style that comes without a plug fitted. Maximum operating voltage 254Vrms and CAT II rated.

Part No: 10/GENNY-LPC-UK

Part No: 10/GENNY-LPC-EU

Part No: 10/GG1540-LPC-ROW



Live Cable Connector (LCC)

This accessory is used to apply the Genny signal to live cables. The Live Cable Connector may only be used by suitably qualified personnel. Maximum operating 440Vrms and CAT III rated.

Part No: 10/GENNY-LCC



Transport accessories

Soft Carry Bag

This soft bag can hold a C.A.T, Genny and their accessories.

Part No: 10/CAT-GENNY-BAG



Accessories for tracing non-conductive utilities

FlexiTrace

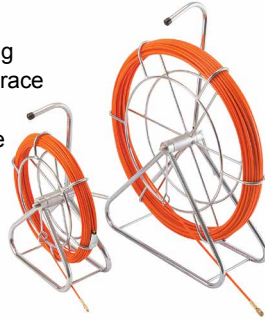
The FlexiTrace reel holds 164' (50m) or 260' (80m) of small diameter rod. The rod can be energized by a Radiodetection Genny and inserted into pipes as small as 12mm. It is used with a Radiodetection C.A.T to find and trace non-metallic ducts and pipes. Available in English, Dutch, French or German language variants.



Part No: 10/TRACE50-XX or 10/TRACE80-XX (XX= D, F, GB, NL)

Flexrod

A flexible fiberglass rod used for propelling Radiodetection sondes through pipes to trace the path and locate blockages. Available in various diameters and lengths. Choose from flexible 0.2" (4.5mm) diameter rods for tight bends up to 0.4" (9mm) for longer pushes, and lengths from 164' (50m) to 500' (150m).



Length		Diameter		Part No:
m	ft	mm	in	
50	160	4.5	3/16	10/FLEXRODF50-4.5
80	260	4.5	3/16	10/FLEXRODF80-4.5
50	160	7	1/4	10/FLEXRODF50-7
100	320	7	1/4	10/FLEXRODF100-7
150	485	7	1/5	10/FLEXRODF150-7
60	195	9	3/8	10/FLEXRODF60-9
120	390	9	3/8	10/FLEXRODF120-9

Sondes

Sondes are self-contained, battery operated devices that are used for tracing ducts/pipes and for locating blockages. They transmit at 33kHz (unless stated) and are normally fitted to a duct rod for inserting and pushing along ducts/pipes or, for smaller diameter sondes, 'jetted'. For full details on the range of Radiodetection sondes and associated accessories contact Radiodetection or view the sonde user guide available on the Radiodetection website.

S6 Microsonde

Measuring 0.25" x 3.5" (6.4mm x 88mm). Locatable to 6.5' (2m). Supplied as a kit to include sonde, flexible adaptor, 2 batteries and case.

Part No: 10/SONDE-MICRO-33

Pack of 10 batteries: 10/SONDE-MICRO-BATPACK



S9 Minisonde

Measuring 0.35" x 5.4" (9mm x 138mm). Locatable to 13' (4m). Supplied as a kit to include sonde, 2 batteries and case.

Part No: 10/SONDE-MINI-33

Pack of 10 batteries: 10/SONDE-MINI-BATPACK



S13 Super Small Sonde

Measuring 0.5" x 2.7" (12.7mm x 68mm) with plain end cap. Locatable to 8.2' (2.5m). Supplied as a kit to include sonde, 10mm threaded end cap, plain end cap with eyelet, 2 batteries and case.

Part No: 10/SONDE-S13-33

Pack of 10 batteries: 10/SONDE-S13-BATPACK



S18 Small Sonde

Measuring 0.70" x 3.22" (18mm x 82mm). Locatable to 13' (4m). Supplied with 10mm threaded end cap and 2 batteries.

Part No: 10/SONDE-S18A-33

Pack of 5 batteries: 10/S18-BATTERYPACK



Standard Sonde

Measuring 1.53" x 4.13" (39mm x 105mm). Locatable to 16" (5m).

33kHz Part No: 10/SONDE-STD-33



Sewer Sonde

Measuring 2.51" x 6.61" (64mm x 168mm). Locatable to 26' (8m).

Part No: 10/SONDE-SEWER-33



Super Sonde

Measuring 2.51" x 12.51" (64mm x 318mm). Locatable to 49.2' (15m).

Part No: 10/SONDE-SUPER-33



Range of sonde accessories

Radiodetection has a wide range of accessories for sonde products including connectors for connecting onto rods/drain pipes with various size fittings. Please see the sonde user guide on the Radiodetection website or contact Radiodetection for more information.

C.A.T Power Accessories and Spares

D Cell Batteries

Alkaline Battery (D-Cell).

Part No: 10/1DCELL-ALK



Set of two rechargeable NiMH batteries (D-Cell 5000mAh).

Part No: 10/2DCELL-R-NIMH

Universal charger (AAA to D-cell).

Part No: 26/UNICHARGER



Radiodetection Ltd. (UK) Western Drive, Bristol BS14 0AF, UK. Tel: +44 (0) 117 976 7776 rd.sales.uk@spx.com

Radiodetection 28 Tower Road, Raymond, Maine 04071, USA. Tel: +1 (207) 655 8525 Toll Free: +1 (877) 247 3797 rd.sales.us@spx.com

To find your local office, please visit: www.radiodetection.com

Copyright © 2019 Radiodetection Ltd. All rights reserved. Radiodetection is a subsidiary of SPX Corporation. Radiodetection, C.A.T, C.A.T4 and Genny are trademarks of Radiodetection Ltd. Due to a policy of continued development, we reserve the right to alter or amend any published specification without notice. This document may not be copied, reproduced, transmitted, modified or used, in whole or in part, without the prior written consent of Radiodetection Ltd.