

## TRADITION AND QUALITY

The first AndoRe pipe repair clamp with uncompromising quality was made in 1982. We are very attentive to the materials used and the continuous development enables the use of the best materials currently available. AndoRe pipe repair clamps are highly durable, designed and made to last. Consequently the lifespan of the pipeline is extended. We are confident in the quality of our AndoRe pipe repair clamps, therefore a **10 years warranty** is standard.

## INTENDED USE

AndoRe pipe repair clamps are suitable for repairing damage on the water, sewer and other pipelines with temperatures of media up to 115 ° C. The materials used allow installation in sea water (version with A4 quality steel) and various aggressive soils. They are being used for all pipe materials (cast iron, steel, asbestos, PE, PVC, ductile ...).

On request we also produce pipe repair clamps for gas lines, hot water lines (HT version for temperatures of the media up to 150° C), oil pipes and high pressure pipelines.

## MATERIALS

AndoRe pipe repair clamps are made entirely of stainless steel A2, AISI 304, EN 1.4301 (with 18% Cr and 10% Ni). Welds are neutralised by an automated welding procedure. Bolts (M12 and M16) are protected against cold welding by special blue coating. The labyrinth seal is made of EPDM rubber according to DIN EN 681.1 and tested according to KTW and W270 standards, for gas pipes NBR rubber is used according to DIN EN 682 standard. Rubber production date is marked on each seal. For protection against damage, dirt and light each clamp is packed individually in a cardboard box with information about installation, product type, pipe diameter and intended use. Each AndoRe pipe repair clamp has a logo of the manufacturer and clamp type stamped on its housing which ensures its origin and quality.

## HIGHLIGHTS

- Side handle and extended bolt enable easy, single person installation.
- Use of high quality materials.
- Light, stable and flexible construction.
- Without any sharp edges - for safe handling.
- Extra blue coating prevents the bolts against cold welding process while tightening.
- Automated welding technology enables homogeneity of welding elements resulting in longer durability against corrosion.
- Labyrinth EPDM seal enables optimal sealing.
- **10 years warranty!**



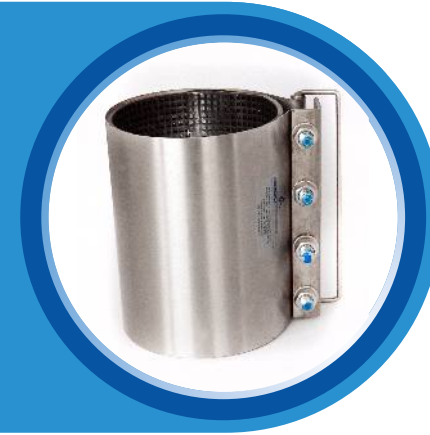
Units 1-2, Loughlinstown Centre, Loughlinstown Drive, Glenageary, Co.Dublin A96 VE42  
Phone: (01) 285 2701 | E-mail: info@ude.ie | Web: www.ude.ie

## ANDORE REPAIR CLAMP - PRODUCT RANGE

### SINGLE-PART ANDORE

For pipe dimensions 51 - 407 mm OD  
Clamp length:

- L = 100 mm /  $\varnothing$  51 -  $\varnothing$  125 / 2 bolts
- L = 200 mm /  $\varnothing$  51 -  $\varnothing$  202 / 3 bolts
- L = 250 mm /  $\varnothing$  128 -  $\varnothing$  283 / 4 bolts
- L = 315 mm /  $\varnothing$  59 -  $\varnothing$  407 / 5 bolts
- L = 575 mm /  $\varnothing$  128 -  $\varnothing$  407 / 9 bolts



### TWO-PART ANDORE

For pipe dimensions 118 - 810 mm OD  
Clamp length:

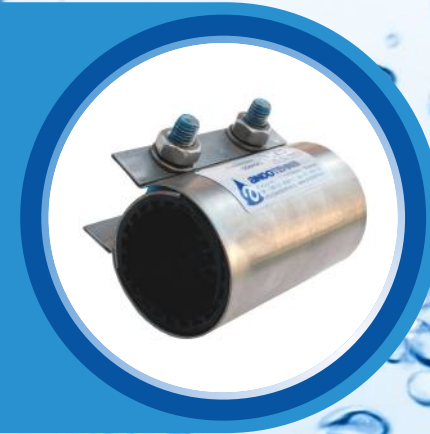
- L = 200 mm /  $\varnothing$  118 -  $\varnothing$  265 / 3 bolts
- L = 315 mm /  $\varnothing$  118 -  $\varnothing$  810 / 5 bolts
- L = 575 mm /  $\varnothing$  271 -  $\varnothing$  810 / 9 bolts



### MINI ANDORE

For pipe dimensions 20 - 57 mm OD

- Clamp length L = 100 mm
- Two bolts
- Optional - 'S' model with extended, full circumference sealing



### CUSTOM MADE

- For large diameter pipes
- Three-part and four-part variant
- Repair clamps with outlet
- Extra long clamps
- Special materials for high-temperature and high-pressure pipelines



# ANDOTEHNA



## ANDORE PIPE REPAIR CLAMP



[www.ude.ie](http://www.ude.ie)

## SINGLE-PART ANDORE REPAIR CLAMP

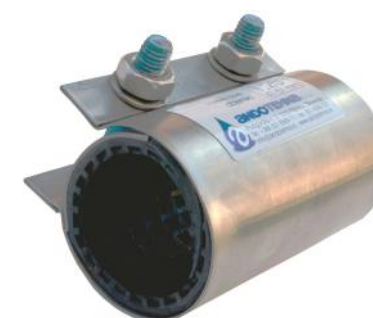
Type	Length [mm]				External ø [mm]	Suitable for pipes					
	K	M	L	XL		STEEL	CAST I.	AC-10	AC-16	PVC PE	DUCTIL
K-54	100				51 - 60	1,5"				50	
M-54		200									
K-63	100				59 - 70	2"	50			63	50
M-63		200									
L-63			315								
K-68	100				63 - 72		50	50	50	63	50
M-68		200									
K-75	100				70 - 81	2,5" 65		60		75	
M-75		200									
L-75			315								
K-82	100				82 - 91	3" 80				90	65
M-82		200									
L-82			315								
K-95	100				90 - 102		80	80	80		80
M-95		200									
L-95			315								
K-104	100				104 - 114	4" 100		80	110		
M-104		200									
L-104			315								
K-115	100				114 - 125		100	100	125	100	
M-115		200									
L-115			315								
K-131	200				128 - 140	125		100	140		
M-131		250									
L-131			315								
XL-131				575							
K-140	200				138 - 150		125	125	140	125	
M-140		250									
L-140			315								
XL-140				575							
K-151	200				150 - 162		125	160			
M-151		250									
L-151			315								
XL-151				575							
K-166	200				163 - 175	150	150			150	
M-166		250									
L-166			315								
XL-166				575							
K-178	200				178 - 192		150	180			
M-178		250									
L-178			315								
XL-178				575							
K-190	200				191 - 202		200			200	
M-190		250									
L-190			315								
XL-190				575							
M-215		250			215 - 226	200	200	175	225	200	
L-215			315								
XL-215				575							
M-225		250			220 - 230	200	200	225	200		
L-225			315								
XL-225				575							
M-233		250			231 - 240		200				
L-233			315								

## TWO-PART ANDORE REPAIR CLAMP

Type	Length [mm]			External ø [mm]	Suitable for pipes						
	M	L	XL		STEEL	CAST I.	AC-10	AC-16	PVC-PE	DUCTIL	
MD-118	200			118 - 140		100	100	100		100	
LD-118		315									
MD-133	200			133 - 155	125		125	125			
LD-133		315									
MD-143	200			143 - 165		125	125	125		125	
LD-143		315									
MD-158	200			158 - 180	150	150	150			150	
LD-158		315									
MD-169	200			169 - 191		150	150				
LD-169		315									
MD-180	200			180 - 202				150	200		
LD-180		315									
MD-192	200			192 - 214		175		200			
LD-192		315									
MD-200	200			200 - 222	200	200	175	200			
LD-200		315									
MD-210	200			210 - 232	200	200	200	225	200		
LD-210		315									
MD-222	200			222 - 244		200	200			200	
LD-222		315									
MD-233	200			233 - 255			200	250			
LD-233		315									
MD-244	200			244 - 265				250			
LD-244		315									
LD-271		315		271 - 291	250	250	250	280	250		
XLD-271			575								
LD-280		315		280 - 300		250					
XLD-280			575								
LD-300		315		300 - 320			250	315			
XLD-300			575								
LD-340		315		340 - 360		300	300	355			
XLD-340			575								
LD-400		315		395 - 415		350	400				
XLD-400			575								
LD-420		315		418 - 438	400	400	350	400			
XLD-420			575								
LD-450		315		448 - 468	450	400	450				
XLD-450			575								
LD-500		315		504 - 524	500	450					
XLD-500			575								
LD-530		315		529 - 549			450	500			
XLD-530			575								
LD-560		315		560 - 580		500					
XLD-560			575								
LD-600		315		598 - 618	600	500					
XLD-600			575								
LD-640		315		640 - 660						600	
XLD-640			575								
LD-670		315		670 - 690		600					
XLD-670			575								
LD-710		315		710 - 730	700	600					
XLD-710			575								
LD-790		315		790 - 810		700					
XLD-790			575								

## MINI ANDORE

Type	External ø [mm]	Length [mm]
Mini Andore 0,50"	19,5 - 26,0	100
Mini Andore 0,75"	24,5 - 33,5	100
Mini Andore 1,00"	32,0 - 37,5	100
Mini Andore 1,25"	38,0 - 48,0	100
Mini Andore 1,50"	44,5 - 57,0	100



Model "S" - with extended, full circumference sealing

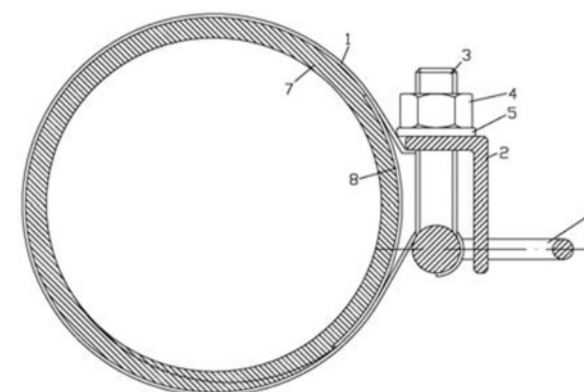
## TECHNICAL DESCRIPTION

### MAXIMUM PRESSURE:

- Water and sewer
- ø 54 - ø 190: max 16 bar
  - ø 190 - ø 400: max 10 bar
  - ø 400 - ø 800: max 6 bar
- Gas
- ø 54 - ø 407: max 6 bar

### TIGHTENING TORQUE:

- ø 54 - ø 130: max 110 Nm
- ø 131 - ø 407: max 130 Nm



- 1 Housing A2 - 1.4301 / A4
- 2 Angle A2 - 1.4301 / A4
- 3 Bolt A2 - 1.4301 / A4
- 4 Nut A2 - 1.4301 / A4
- 5 Washer A2 - 1.4301 / A4
- 6 Installation handle A2 - 1.4301 / A4
- 7 Seal EPDM KTW/W270
- 8 Protective metal sheet A2 - 1.4301 / A4