



**RD8200SG
& C.A.T
MANAGER
ONLINE
FINALIST OF**



**Irish Construction
Excellence Awards 2024**
24 May 2024 | Convention Centre Dublin

UNDERGROUND DETECTION EQUIPMENT PRODUCT BROCHURE

2024

NEW LAUNCHED PRODUCTS



**MMS3 &
Surveymaster**



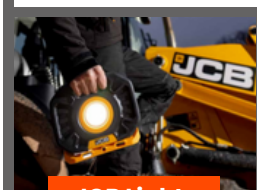
Videoflex



**Drain Inspection
Camera**



LMX-150



JCB Lights



(01) 285 2701



www.ude.ie



experts@ude.ie

TABLE OF CONTENTS



1

ABOUT US

THE UNDERGROUND EXPERTS	01
-------------------------------	----

2

PRODUCTS

INSPECTION	02-07
CABLE LOCATION	08-12
PIPE DETECTION	13-16
LEAK DETECTION	17-21
METAL DETECTORS & LIFTERS	22-24
THERMAL IMAGING CAMERAS	25-29
OTHER PRODUCTS	30-33

3

BRANDS WE WORK WITH	34
----------------------------------	----

4

CONTACT US	35
-------------------------	----



THE UNDERGROUND EXPERTS

BUILDING RELATIONSHIPS, SELLING SOLUTIONS SINCE 1986

At UDE we measure the value of technology by how it benefits our customers. Its about what they need to do and what they need to achieve. Our customers are paramount thats why customers who purchased products from us in the 80's remain loyal to us today. If you value good customer service and quality products let us show you how we can help.



AT UDE,

We have built our company on quality products backed up with excellent after sales service. Our aim is to provide our customers not only with the equipment that best suits their needs but also to provide them with the knowledge and expertise to allow them to solve any of their location requirements.

Underground Detection Equipment Ltd was established in 1986. We have been representing Radiodetection Ltd the manufacturers of the original CAT & Genny since we began trading. We are agents for F.A.S.T GmbH for over 18 years, supplying their full range of water leak detection equipment and Ground Microphones. Esders GmbH supplying gas leak detection equipment and MADE S.A France with the Gastracker2.

Our team has over 35 years experience in the Underground Utilities Industry. We believe that our customers deserve the best and we therefore strive to deliver high quality, reliable products that our customers can use with confidence.



PRODUCTS FOR INSPECTION

- Flexiprobe
- Flexitrax – Modular Crawler System
- Pipe or Drain Inspection Camera System
- Laserliner-VideoFlex-HD



FLEXIPROBE

PORTABLE INSPECTION SYSTEM

The flexiprobe P540c-

- pushrod inspection systems offer a range of pushrod reels with distinct capabilities and rod lengths, alongside two specialist cameras



The P542 system-

- designed to deliver optimum performance in medium-diameter pipes starting from 4 / 100mm.
- Its compact and robust design allows the user to extend its use to smaller pipes (will fit in a 2" / 50mm pipe).
- It offers a balanced compromise between bendability & stiffness, allowing good manoeuvrability & push performance.
- It is offered in 2 lengths: 200' / 60m or 400' / 120m and can be used with either the 1" / 25mm or the 2" / 50mm cameras.



TECHNICAL SPECIFICATION



(01) 285 2701



www.ude.ie



experts@ude.ie

P350 FLEXITRAX – MODULAR CRAWLER SYSTEM

The Pearpoint transportable mainline range offers portability and flexibility with the ability to run crawlers or pushrod systems. The P350 system offers digital recording and wireless connectivity and can drive P350 crawlers or the flexiprobe P340+ pushrod range.

TECHNICAL SPECIFICATION



PIPE OR DRAIN INSPECTION CAMERA SYSTEM

Model No. 3499F

This is a professional video inspection camera designed for inspection of sewer, pipe, air ducts, underground cable pipes, etc. Equipped with a Ø23mm Sony CCD camera head, 20-40m fiberglass rod cable and 7" LCD monitor with SD card recording, it's a great choice for pipe DN 40mm-150mm.

Model No. 3499FB-

- Pipe Sizes: DN 1.2"/30mm to DN 6"/150mm
- Minimum diameter for 90° elbows: 50mm/2"
- Push Rod Diameter: 6.8mm/0.27"
- Push Rod Length: 66'/20m.100'/30m.130'/40m
- Camera Head Diameter: 0.9"/23mm
- Screen Size: 10" or 7" LCD monitor with DVR
- One push record Video & audio button
- One push Take still picture button
- Weight: 12.5kg/28 lbs
- Standard Features: Meter counter, Keyboard
- Optional Features: 512Hz Sonde, Self-Leveling, 38mm head (Fits for Pipe DN 2"/50mm-12"/300mm, Minimum diameter for 90° elbows: 120mm/4.7")



TECHNICAL SPECIFICATION





14MM DRAIN/PIPE INSPECTION CAMERA SYSTEM

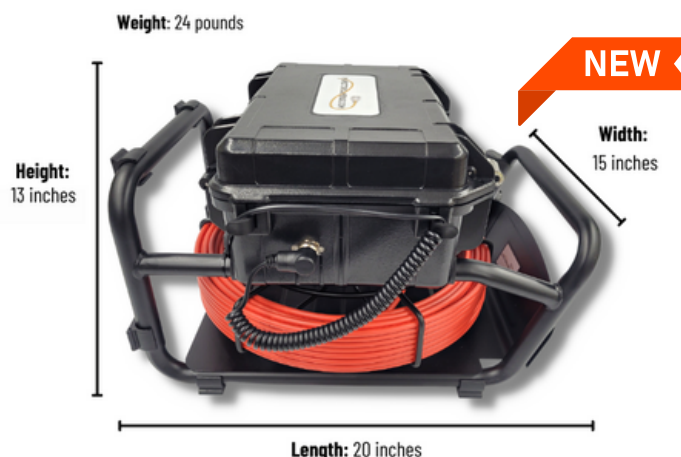
Model No. 3499FB -14 WITH 20-40M CABLE

- Battery: Rechargeable 6400mAh Li-ion Battery
- Led lights: 4 white LEDs
- Pipe Sizes: DN 0.8"/20mm to DN 3.2"/80mm
- Minimum diameter for 90° elbows: 32mm/1.3"
- Push Rod Length: 66'/20m.100'/30m.130'/40m
- Push Rod Diameter: 4.8mm/0.19"
- Camera Head Diameter:0.6"/14mm
- Screen Size:10" or 7" LCD monitor with DVR
- One push record Video & audio button
- One push Take still picture button

23MM DRAIN/PIPE INSPECTION CAMERA SYSTEM

Model No. 3499FB -23- WITH 20-40M CABLE

- Pipe Sizes: DN 1.2"/30mm to DN 6"/150mm
- Minimum diameter for 90° elbows: 50mm/2"
- Push Rod Length: 66'/20m.100'/30m.130'/40m
- Push Rod Diameter: 5.2mm/0.2"
- Camera Head Diameter:0.9"/23mm
- Screen Size:10" or 7" LCD monitor with DVR
- Battery: Rechargeable 6400mAh Li-ion Battery
- Led lights:15 white LEDs
- One push record Video & audio button
- One push Take still picture button
- Weight:12kg/27 lbs
- Standard Features: Meter counter, Keyboard
- Optional Features: 512Hz Sonde, Self-Leveling, 38mm head (Fits for Pipe)



(01) 285 2701



www.ude.ie



experts@ude.ie

LASERLINER- VIDEOFLEX-HD

This professional video inspection system with compact camera head is perfect for precise visual inspection of small openings, such in pipework, wall cavities and motor vehicles. The high-resolution camera allows extremely detailed images and videos to be captured with 1:1 reproduction on the display with no loss of quality. The sharp digital zoom allows details to be clearly identified. Other benefits are the high-quality LED object lighting, optimum greyscale contrast reproduction, petrol and diesel resistant camera head, and the magnetic stand for setting up the base unit.



PRODUCTS FOR

CABLE LOCATION

- CAT4 – Cable Avoidance Tool
- Genny4 – Signal Generator
- RD7200 RD8200 – Precision Locating



CAT4 – CABLE AVOIDANCE TOOL

C.A.T4

The C.A.T4 is the standard model of the range. Using it with the Genny4 transmitter, experienced operators will be able to find more buried utilities, faster.

C.A.T4+

The C.A.T4+ offers the same locating performance as the C.A.T4 but with addition of Depth measurement, allowing better identification of the route of buried utilities.

gC.A.T4

This model adds GPS position to the usage data recorded. Bluetooth connectivity allows seamless transfer of usage data to the C.A.T Manager Online cloud based system for near real-time monitoring of operators' performance.

C.A.T Manager Online- Mobile

C.A.T Manager is a software suite designed to offer online or local analysis of usage behaviours, explore surveyed locations using Google Maps, and produce surveys and usage reports. Data can be exported and shared as KML or CSV files.



TECHNICAL SPECIFICATION

[DOWNLOAD](#)

(01) 285 2701



www.ude.ie



experts@ude.ie

GENNY4 – SIGNAL GENERATOR

Genny4's patented simultaneous dual-frequency signal output facilitates location of small diameter cables such as telecoms and street lighting, including spurs. All C.A.T4 locator models have patented technology to detect both signals simultaneously. The power boost function in Genny4 enables the locate signal to travel further and deeper, and couple onto utilities more easily.



TECHNICAL SPECIFICATION



DOWNLOAD



(01) 285 2701



www.ude.ie



experts@ude.ie

RD7200 RD8200 – PRECISION LOCATING

The Precision Locate range of underground utility locators comprises: the fully-featured, multi-function RD8200 cable & pipe locator; the utility-specific RD7200 locator, the innovative RD7000M and RD8000M locators that combine the ability to find buried Markers with finding underground cables and pipes; and the single-frequency RD5000WL pipe locator for the water and gas industries. These locators must be used with our signal transmitters, TX-5 and TX-10, to achieve full performance. Plastic pipes, frequently used to carry water or gas, can be found by using our range of transmitting Sondes.



TECHNICAL SPECIFICATION RD7200 [↓ DOWNLOAD](#)
RD8200 [↓ DOWNLOAD](#)

RD8200SG – PRECISION LOCATING

FINALIST OF  **Irish Construction Excellence Awards 2024**
 24 May 2024 | Convention Centre Dublin

Locate and map buried utilities in a single operation. Mapping buried utilities has been a longstanding practice in the industry. Access to reliable maps plays a crucial role in safety & risk mitigation, preventative maintenance and emergency repairs.



TECHNICAL SPECIFICATION RD8200SG [↓ DOWNLOAD](#)



(01) 285 2701



www.ude.ie



experts@ude.ie

TX TRANSMITTER

PRECISION LOCATOR RANGE

Product Overview:

The Tx family of signal transmitters has been designed to complement Radiodetection's advanced high-precision cable and pipe locators including the RD8200, RD7200, marker locator and PCM ranges

Product Descriptions: Signal transmitter

Intended Use: Multi-function transmitter

Standard Equipment:

- Transmitter
- Integrated tool tray
- Earth spool
- Earth spike
- Direct connection leads
- Magne



TECHNICAL SPECIFICATION TX TRANSMITTER



PRODUCTS FOR

PIPE DETECTION

- LMX – Ground Penetrating Radar
- All Materials Locator – AML Pro
- PWG – Pulse Wave Generator
- RD500 – Plastic Pipe Locator
- FlexiTrace



LMX- 150

GROUND PENETRATING RADAR

GPR (Ground Penetrating Radar) systems enable operators to detect underground utilities, particularly non-conductive pipes and ducts, using high-frequency Radar. When locating underground utilities, GPR can be a valuable complement to electromagnetic cable and pipe locators.

LMX150™ FINDAR® GPR complements traditional pipe and cable locators and allows you to locate targets below the surface.



TECHNICAL SPECIFICATION

[DOWNLOAD](#)[\(01\) 285 2701](tel:(01)2852701)www.ude.ieexperts@ude.ie

PWG

PULSE WAVE GENERATOR

The PWG pipe locating system consists of a rechargeable power pack and an electronic pulse generator (PWG) to be attached to a hydrant. This system allows location of metallic or non-metal pipes. The pipe section does not need to be shut down during the location process.

The particular pipe section requires a minimum pressure of 2 bar, and handling the system is very simple. No special skills required.

**TECHNICAL SPECIFICATION****AML PRO**

ALL MATERIALS LOCATOR

The AML PRO™ is a scientific instrument that utilizes ultra-high radio frequencies to find differences in densities. This offers the best method for locating PVC & PE pipes and nearly any other object that has an edge

**TECHNICAL SPECIFICATION**

(01) 285 2701



www.ude.ie



experts@ude.ie

RD500

PLASTIC PIPE LOCATOR

The Electronic Transonde is an easy to use method for locating non metallic domestic water services. The battery operated Transonde connects via a tap on the mains supply. The Transonde is used to vibrate the water as it passes through it and across an internal spring system sending a minute sound wave back along the pipe which can then be located using a ground microphone.



TECHNICAL SPECIFICATION



FLEXITRACE

The FlexiTrace reel holds 164' (50m) or 260' (80m) of small diameter rod. The rod can be energised by a Radiodetection transmitter* or Genny and inserted into pipes as small as 12mm. It is used with a Radiodetection locator or C.A.T to find and trace small diameter plastic pipes etc.



TECHNICAL SPECIFICATION



PRODUCTS FOR

LEAK DETECTION

- Aqua M50, M100, M300- leak Detector
- PipeMic Leak Detector
- Gascheck H2
- CAT4 – Cable Avoidance Tool
- Laserliner-VideoFlex-HD
- Surveymaster-PROTIMETER
- MMS3- PROTIMETER



AQUA M50 LEAK DETECTOR

The Aqua-M50D is applied in the water supply business to pre-locate (testrod) leaks. Due to its handy size, this measuring instrument is especially well suited to listen to water meters. The Aqua M50 is supplied with a number of attachments for getting into small tight spaces.



TECHNICAL SPECIFICATION



AQUA M100 LEAK DETECTOR

The Aqua-M100D is used in the water supply business to pre-locate (testrod) and to calibrate leakages (geophone). In combination with the Pulse Wave Generator (PWG), it can also be applied to trace the run of a pipeline. The testrod has been specially developed and features an extremely high sensitivity. It has been designed to detect even minute leakages.



TECHNICAL SPECIFICATION



AQUA M300 LEAK DETECTOR

The Aqua M300 facilitates the pinpointing of leaks both acoustically and using tracer gas. This system combines both to allow the user to trace even the smallest of leaks while also allowing long term measurements.



TECHNICAL SPECIFICATION



PIPEMIC LEAK DETECTOR

With the acoustic pig (PipeMic) developed by F.A.S.T., leaks on plastic connections/pipes can be located easily due to a special lock which allows the probe to be pushed into the pipe with high pressure (up to 16 bar). As the length and the exact position of the inserted glass fibre can be determined, the leakage spot can be determined with utmost precision.



The acoustic signals are transferred to the headphones and to the geophone respectively via bluetooth. The noise level received is then acoustically and optically displayed on any Aqua-M series

TECHNICAL SPECIFICATION



GASCHECK H2

WATER LEAK DETECTOR

With the Gas-Check-H2 even tiny little leakages can be pinpointed. Hydrogen diffuses through almost any material due to its molecular size. The pipeline section to be checked is filled entirely with gas, and the pressure is increased slowly until the measurement varies according to the size of the leakage, the kind of soil, and the surface structure.



TECHNICAL SPECIFICATION



LASERLINER-VIDEOFLEX-HD

This professional video inspection system with compact camera head is perfect for precise visual inspection of small openings, such in pipework, wall cavities and motor vehicles. The high-resolution camera allows extremely detailed images and videos to be captured with 1:1 reproduction on the display with no loss of quality. The sharp digital zoom allows details to be clearly identified. Other benefits are the high-quality LED object lighting, optimum greyscale contrast reproduction, petrol and diesel resistant camera head, and the magnetic stand for setting up the base unit.



TECHNICAL SPECIFICATION



(01) 285 2701



www.ude.ie



experts@ude.ie

MMS3- PROTIMETER

Now, with wireless capability, the Protimeter MMS3 represents the latest in moisture measurement technology. Its ergonomic 4-in-1 design allows for fast and accurate full building moisture diagnostics both on and below the surface, from new building construction to refurbishing projects in existing buildings. Also, with built-in hygrometric capabilities and infrared (IR) laser thermometer, the MMS3 also assesses indoor air quality conditions.



TECHNICAL SPECIFICATION



SURVEYMASTER™- PROTIMETER

The Surveymaster™ can help building professionals—such as contractors, surveyors, home builders and architects—assess building moisture levels during new build and refurbishing activities. Excessive moisture in buildings can lead to decay and deterioration of components and decorative finishes.



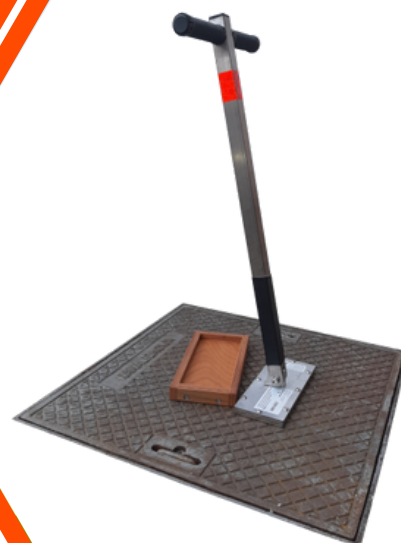
TECHNICAL SPECIFICATION



PRODUCTS FOR

METAL DETECTORS & LIFTERS

- RD312 – Metal Cover Locator
- VIKING – WASP Metal Detector
- ML-3S & ML-3L MAGNETIC LOCATORS
- Magnetic Hoist Hammer
- MK400 Magnetic Hoist



RD312 – METAL COVER LOCATOR

The RD312 is used for locating buried manhole covers, stopcocks and valves. Easy lightweight with push button on/off controls make the RD312 extremely user friendly.

TECHNICAL
SPECIFICATION



DOWNLOAD



ML-3S & ML-3L MAGNETIC LOCATORS

Detection of ferrous metal objects, including property pins and markers, live wires, weapons, devices and other objects



TECHNICAL
SPECIFICATION



DOWNLOAD

VIKING – WASP METAL DETECTOR

The WASP metal detector is simple to use with just two controls, Fine and Coarse tuning, and provides good depth penetration, rugged reliability and distinctive and highly visible yellow and black colouring.



TECHNICAL SPECIFICATION



DOWNLOAD



(01) 285 2701



www.ude.ie



experts@ude.ie

MAGNETIC HOIST HAMMER

Magnetic hoist hammer is a perfect gadget for opening of street caps, underground hydrant covers, manhole lids and all kinds of cast iron covers.

Top features include:

- * Super strong – Magnet strength 220kg
- * Multipurpose hammer tip design
- * Anatomically shaped hammerhead for easy handling
- * Stainless handle with rubber grip
- * Permanent, anticorodal magnet



TECHNICAL SPECIFICATION



MK400 MAGNETIC HOIST

TMK400 is an universal magnetic hoist for opening all kinds of cast iron covers and grates. Weighing less than 5 kg and a magnet with a 400 kg nominal lifting force it is a handy but super powerful must have gadget for any infrastructure worker. With MK400 the cast iron covers can be lifted, tilted or dragged. The self-standing mode reduces the need to bend down for picking up the tool.

Top features include:

- * Magnet strength: 400 kg
- * Magnetised area surface: 240 cm
- * Tool weight: 4.7 kg
- * Rubber handles, safety reflective element



TECHNICAL SPECIFICATION



HIKMICRO

THERMAL IMAGING CAMERAS

- M10 Thermal Imaging Camera
- B1L Thermal Imaging Camera
- E1L Handheld Thermography Camera
- Eco- Handheld Thermal Camera
- Eco-V Handheld Thermal Camera
- Pocket 2 Thermal Imaging Camera
- Pocket Series – PocketE Thermal Imaging Camera
- Acoustic Imaging Camera



G60 – HANDHELD THERMAL CAMERA

HIKMICRO G60 Handheld Thermal Camera is specially designed for temperature measurement. It's equipped with a 640 × 480 resolution thermal detector. It helps the staff to quickly find the high-temperature targets in the environment. Meanwhile, it provides assistance with decisions and ensures safety. The device is mainly applied to various industries, such as Building, HVAC, auto industry, etc.



TECHNICAL SPECIFICATION



AI56 – ACOUSTIC IMAGING CAMERA

The HIKMICRO AI56 acoustic imaging camera is a professional product for gas leak detection and partial discharge detection.



TECHNICAL SPECIFICATION



EIL HANDHELD THERMOGRAPHY CAMERA

The thermographic handheld camera is based on the thermal technology, specially designed for the needs of temperature measuring applications. People can quickly troubleshoot faults on-site.

**TECHNICAL
SPECIFICATION**



DOWNLOAD



ECO- HANDHELD THERMAL CAMERA

The handheld thermal camera is based on the thermal technology, specially designed for the needs of temperature of temperature measuring applications. People can quickly troubleshoot faults on-site.

TECHNICAL SPECIFICATION



DOWNLOAD



(01) 285 2701



www.ude.ie



experts@ude.ie

ECO-V

HANDHELD THERMAL CAMERA

The handheld thermal camera is based on the thermal technology, specially designed for the needs of temperature measuring applications. People can quickly troubleshoot faults on-site.



**TECHNICAL
SPECIFICATION**



DOWNLOAD

HIKMICRO M SERIES- M11

THERMAL IMAGING CAMERA

HIKMICRO M11 handheld thermography camera is specially designed for professional inspections. It's equipped with a 192 × 144 resolution thermal detector and an 8MP resolution visual camera. The high resolution 3.5-inch touch screen displays crisp, clear images and streamlines camera operations. Imaging modes include thermal, visual, picture in a picture of the optical and thermal view, and fusion of both channels.



TECHNICAL SPECIFICATION



DOWNLOAD



(01) 285 2701



www.ude.ie



experts@ude.ie

POCKET SERIES – POCKETE THERMAL IMAGING CAMERA

HIKMICRO Pocket Series has a high-resolution HIKMICRO VOx detector, an 0.3 MP optical camera, and a 3.5" LCD touch screen. It helps you quickly and efficiently locate hidden problems and accurately measure abnormal temperatures.



TECHNICAL SPECIFICATION



HM-AP56-W/W-AI56 ACOUSTIC IMAGING CAMERA

The HIKMIRCO AI56 acoustic imaging camera is a professional product for sound source localization. With 64 Low-noise.

MEMS microphones and adjustable bandwidth range from 20 Hz to 60 kHz, AI56 provides an easy and effective way to locate the pressurized air leaks in industrial environments or detecting partial discharge in high-voltage systems.



TECHNICAL SPECIFICATION



OTHER PRODUCTS

- AndoRe pipe repair clamps
- EZVIZ- Portable Power Station
- DERBLAUE®- Pumping system
- JCB Lights

ANDOTEHNA



EZVIZ PS300

PORTABLE POWER STATION

EZVIZ Portable Power Station comes in handy under various situation. In case of sudden power blackout or emergencies, it provides peace of mind. Make it a regular part of your outdoor adventures for easy, worry-free power.



TECHNICAL SPECIFICATION



DOWNLOAD

EZVIZ PS600

PORTABLE POWER STATION

The PS600 is a powerhouse to help you explore nature further than ever before. Whether you are camping, enjoying a family outing, or just going wherever the road takes you, the EZVIZ Portable Power Station 600 is ready to charge your essential electronics and small appliances via fast-charging USB-C and other ports.



TECHNICAL SPECIFICATION



DOWNLOAD



(01) 285 2701



www.ude.ie



experts@ude.ie

ANDORE

PIPE REPAIR CLAMPS

AndoRe pipe repair clamps are made entirely of stainless steel A2, AISI 304, EN 1.4301 (with 18% Cr and 10% Ni). Welds are neutralised by an automated welding procedure. Bolts (M12 and M16) are protected against cold welding by special blue coating. The labyrinth seal is made of EPDM rubber according to DIN EN 681.1 and tested according to KTW and W270 standards, for gas pipes NBR rubber is used according to DIN EN 682 standard.

ANDOTEHNA



TECHNICAL SPECIFICATION



DERBLAUE® – PUMPING SYSTEM

- Powerful pumping capacity of 10 liters/min., 0,5 bar
- 3 m water hose with mounting clip
- proofed up to 60 degrees
- Carrying bag
- Power supply unit to operate the pump and the battery
- Deep suction up to 5 mm



JCB LIGHTS

**DESIGNED TO BE BRIGHTER, TOUGHER, GREENER
AND TO BE USED IN THE MOST DEMANDING WORK
ENVIRONMENTS.**

Our range of JCB rechargeable and portable work lights, use the latest in battery and LED technology, which delivers a near daylight high output light with cable-free long run times. The complete range is designed and built to be strong and durable, which mean they can handle even the most challenging work environment. With a 3-year warranty, you have the peace of mind that JCB Work Lights will be working as long and as hard as you.

TECHNICAL SPECIFICATION



DOWNLOAD

NEW



(01) 285 2701



www.ude.ie



experts@ude.ie

BRANDS WE WORK WITH

RADIODETECTION 

PEARPOINT 

SENSORS & SOFTWARE
from RADIODETECTION



HIKMICRO



SUBSURFACE
INSTRUMENTS, INC



FAST
GROUPE CLAIRE



ANDOTEHNA d.o.o.
PROIZVODNJA • INŽENIRING • TRGOVINA

SINCE 1979



VIKING
METAL DETECTORS



EZVIZ™

DERBLAUE®

Contact Us



www.ude.ie



Dublin- (01) 285 2701,
Glasgow- (0141) 266 0696



experts@ude.ie



Units 1-2 Loughlinstown Centre,
Loughlinstown Drive, Glenageary,
Co.Dublin A96 VE42

